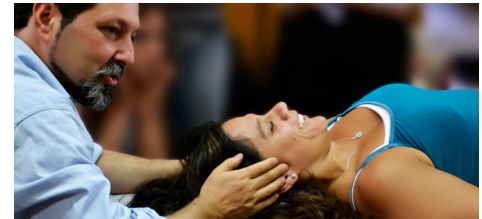


Brain Therapy for Neonatal Reflexes & General Reflexes in Adults and Children

Sunday, March 23 through Tuesday, March 25, 2025
Location: Pre-Convocation 2025 at Rosen Shingle Creek
Course Director: Bruno J. Chikly, MD, DO (France)
Register online at www.academyofosteopathy.org



Course Description

This class will address retained and reoccurring neonatal and general reflexes in children and adults.

Many children and adults have neurological disorders, learning disabilities, cognitive challenges that can be traced back to retained or reoccurring primitive reflexes. Children can keep their primary reflexes for longer than expected.

Adults can see the reoccurrence of primitive or dysfunction of primitive reflexes in many pathologies, including trauma, PTSD, Parkinson's, dementia, etc.

These retained and reoccurring reflexes can create numerous neurological dysfunctions and learning disabilities, sensory processing disorder / sensory integration dysfunction.

These reflexes can be found in Autism spectrum disorders, learning disabilities, dyslexia, dyscalculia, dysgraphia, speech development disorders, speech-language delay, sensory processing disorder / sensory integration dysfunction, ADD/ ADHD, CP, trauma, PTSD, ADHD, auditory and visual processing, problems with focus and concentration, vestibular integration, balance issues, poor postural control, social skills issues, stroke, Parkinson, dementia, some response on Down syndrome (trisomy), etc.

In this class, you will use quick, specific, and efficient manual therapy techniques to inhibit these primary/infant reflexes. Inhibitory movement patterns will be presented.

Course Objectives

- By the end of the first day participants will be able to correctly demonstrate the Hypothalamic Release Technique applied to retained primary reflexes.

By the end of the course participants will be able to:

- Correctly demonstrate how to integrate a retained Tendon Guard Reflex (TGR), Moro Reflex, Babkin Reflex, Hand supporting Reflex, Babinski Reflex, Bauer Crawling Reflex, Plantar Reflex, Tonic Labyrinthine Reflex (TLR), Symmetrical Tonic Neck Reflex (STNR), Asymmetrical Tonic Neck Reflex (ATNR), Spinal Galant Reflex, and Rooting Reflex using a Brain Therapy level 1 (B1) approach.
- Correctly analyze a patient to determine a precise area of the CNS which inhibits one specific retained primary reflex, based on the Brain Therapy level 1 (B1) approach.

Continuing Medical Education

20 credits of AOA Category 1-A CME are anticipated.

Course Prerequisite

A 40-hour introduction to cranial course.

Course Location

Rosen Shingle Creek,
 9939 Universal Blvd., Orlando, FL 32819

Course Dates & Times

- Sunday, March 23, 2025 8:30am-5:30pm
- Monday, March 24, 2025 8:30am-5:30pm
- Tuesday, March 25, 2025 8am-2:30pm

Meal Information

Morning coffee/tea provided each day.
 Lunch not provided; a one-hour lunch break will be scheduled.

Course Faculty

Bruno J. Chikly, MD, DO (France), LMT (AZ) is a graduate of the Medical School at Saint Antoine Hospital in France, where his internship in general medicine included training in endocrinology, surgery, neurology, and psychiatry. Dr. Chikly also earned the United States equivalent of a master's degree in psychology from Paris XIII University, France.

Dr. Chikly received a Doctorate in Osteopathy (hon.) from the European School of Osteopathy (ESO), Maidstone (Renzo Molinari), UK (2002); a Doctorate in Osteopathy from CROMON/AIROP (2009).

He was an Adjunct Professor of the Union Institute and University Graduate College (University of Ohio).

In his definitive text, "Silent Waves: Theory and Practice of Lymph Drainage Therapy," 3rd Edition (480 pages), Dr. Chikly addresses the applications for lymphedema, chronic pain, and inflammation.

Dr. Chikly is an international seminar leader, lecturer, and writer. He has spoken to most North American professional medical and health-related groups and many lymphedema support groups. He lives with his wife and teaching partner Alaya Chikly, LMT.

Registration Fees

	On or before January 22, 2025		January 23–February 28, 2025		March 1–March 23, 2025	
	With Convo	Without Convo	With Convo	Without Convo	With Convo	Without Convo
Academy member in practice*	\$851	\$946	\$941	\$1,046	\$1,041	\$1,146
Member resident or intern (DO or MD)	\$671	\$746	\$761	\$846	\$861	\$946
Student Members (SAAO)	\$491	\$546	\$581	\$646	\$681	\$746
Practicing nonmember (DO or MD)	\$1,211	\$1,346	\$1,301	\$1,446	\$1,401	\$1,546
Nonmember resident or intern (DO or MD)	\$1,031	\$1,146	\$1,121	\$1,246	\$1,221	\$1,346
Nonmember student	\$851	\$946	\$941	\$1,046	\$1,041	\$1,146

* The AAO's associate members, international affiliates and supporter members are entitled to register at the same fees as full members.

Questions or need additional information? Contact event planner Dreonna Howard at eventplanner@academyofosteopathy.org